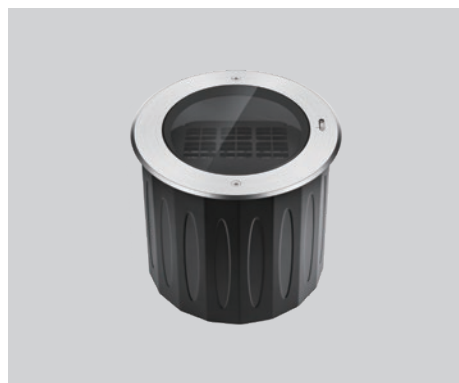


PRODUCT DATASHEET

Last information update: May 2023



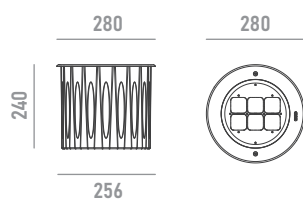
SONAX

1914W50

Inground LED luminaire for outdoor applications

Technical Features

Power	50W
Input voltage	DC24V (constant voltage)
Insulation class	III
Delivered flux	2,250 lm ±10%
Light distribution type	symmetrical
Beam angle	ultra spot 2°
Light colour / CCT	2700K, 3000K, 4000K
CRI	80
Source type	LED
LED number	6
MacAdam step	5
Power supply	Not included
Control	ON/OFF
Protection index	IP67
Impact resistance	IK10
Walk over	yes
Drive over	yes
Lifetime	50,000 hours Ta=25°C



Construction

Aluminum body and recessed box, tempered glass cover, stainless steel trim, polycarbonate optical lenses.

Temperature Limits

Ambient operating temperature	from -20°C to +50°C
Storage temperature	from -40°C to +70°C

Installation

Ground recessed with recessed box.

Finish Colours

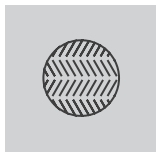
Stainless steel (for trim) as standard colour. RAL colours on request.

Wiring

Power input cable OPEN END 500mm



Optional Accessories



accessory for improved safety
*can not be ordered separately

anti-slip glass

Ordering Information

example: 1914W50.0002.2780.01+A1

1914W50 · [] · [] · [] + []

product	beam angle	light colour / CCT	finish colour	accessory
SONAX 50W ULTRA SPOT	0002 2°	2780 2700K RA80	01 stainless steel	A1 anti-slip glass
		3080 3000K RA80		
		4080 4000K RA80		

PRODUCT DATASHEET

Last information update: May 2023



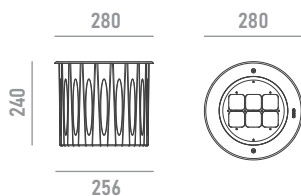
SONAX

1914W50(220V)

Inground LED luminaire for outdoor applications

Technical Features

Power	50W
Input voltage	AC100-240V
Insulation class	I
Delivered flux	2,250 lm ±10%
Light distribution type	symmetrical
Beam angle	ultra spot 2°
Light colour / CCT	2700K, 3000K, 4000K
CRI	80
Source type	LED
LED number	6
MacAdam step	5
Power supply	built-in
Control	ON/OFF
Protection index	IP67
Impact resistance	IK10
Walk over	yes
Drive over	yes
Lifetime	50,000 hours Ta=25°C



Construction

Aluminum body and recessed box, tempered glass cover, stainless steel trim, polycarbonate optical lenses.

Temperature Limits

Ambient operating temperature	from -20°C to +50°C
Storage temperature	from -40°C to +70°C

Installation

Ground recessed with recessed box.

Finish Colours

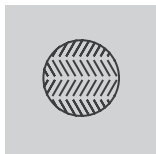
Stainless steel (for trim) as standard colour. RAL colours on request.

Wiring

Power input cable OPEN END 500mm



Optional Accessories



accessory for improved safety
*can not be ordered separately

anti-slip glass

Ordering Information

example: 1914W50(220V).0002.2780.01+A1

1914W50(220V) · [] · [] · [] + []

product	beam angle	light colour / CCT	finish colour	accessory
SONAX 50W ULTRA SPOT	0002 2°	2780 2700K RA80	01 stainless steel	A1 anti-slip glass
		3080 3000K RA80		
		4080 4000K RA80		