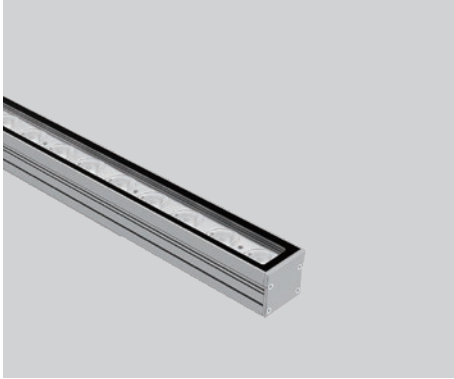


PRODUCT DATASHEET

Last information update: May 2023



YORK M 1000MM

2504W100

Architectural linear LED wallwasher for outdoor applications

Technical Features

Power	100W
Input voltage	DC24V (constant voltage)
Insulation class	III
Delivered flux	4,000 lm ±10%
Light distribution type	symmetrical / elliptical
Beam angle	15°, 20°, 30° / 15°x60°
Light colour / CCT	RGBCLAW
CRI	-
Source type	LED (7-IN-1)
LED number	20
MacAdam step	-
Power supply	Not included
Control	DMX512
Protection index	IP66
Impact resistance	IK07
Lifetime	50,000 hours Ta=25°C



Construction

Anodized extruded aluminum body, tempered glass cover, polycarbonate optical lenses.

Temperature Limits

Ambient operating temperature	from -20°C to +50°C
Storage temperature	from -40°C to +70°C

Installation

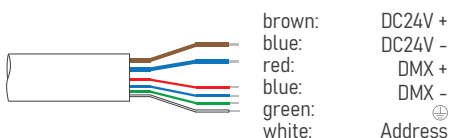
Surface mounted with adjustable bracket.

Finish Colours

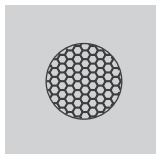
Aluminum as standard colour, RAL colours on request.

Wiring

Power/DMX input cable MALE connector 500mm
Power/DMX output cable FEMALE connector 500mm

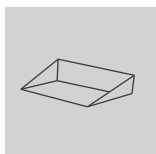


Optional Accessories

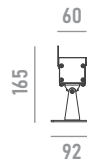


anti-glare accessory for improved visual comfort
*can not be ordered separately

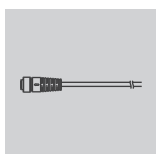
honeycomb



anti-glare accessory for improved visual comfort
*can not be ordered separately

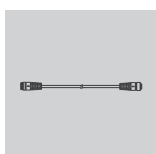


visor



with female 6-pin waterproof connector for DMX
* specify cable length to complete order

leader cable



with male and female 6-pin waterproof connector for DMX
* specify cable length to complete order

extension cable

Ordering Information

example: 2504W100.0015.7130K.01+A1

2504W100 · [] · [] · [] + []

product	beam angle	light colour / CCT	finish colour	accessory
YORK M 1000MM 100W	0015 15°	7130K RGBCLA+3000K	01 aluminum	A1 honeycomb
	0020 20°	7140K RGBCLA+4000K		A2 visor
	0030 30°			LC6 leader cable
	1560 15°x60°			EC6 extension cable