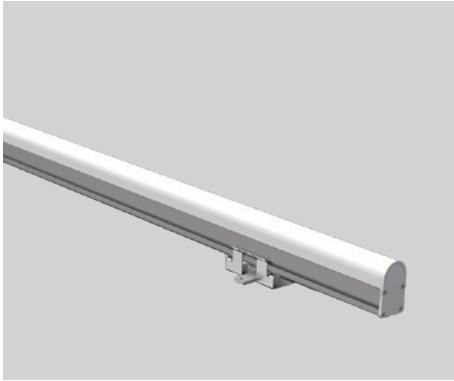


PRODUCT DATASHEET

Last information update: Mar. 2025



UNI-LINE

2608W15

Linear LED contouring light for outdoor applications

Technical Features

Power	15W
Input voltage	DC24V (constant voltage)
Insulation class	III
Delivered flux	670 lm ±10%
Light distribution type	Direct-view
Beam angle	120°
Light colour / CCT	RGBW
CRI	-
Source type	LED (4-IN-1)
LED number	60
MacAdam step	-
Power supply	Not included
Control	DMX512 (built-in DMX decoder)
Pixel	10 / meter
Protection index	IP65
Impact resistance	IK05
Lifetime	50,000 hours Ta=25°C



Construction

Anodized extruded aluminum body, polycarbonate diffuser.

Temperature Limits

Ambient operating temperature	from -20°C to +50°C
Storage temperature	from -40°C to +70°C

Installation

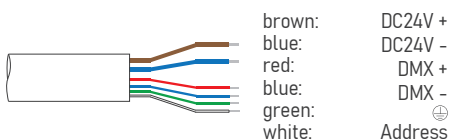
Surface mounted with non-adjustable bracket (standard).

Finish Colours

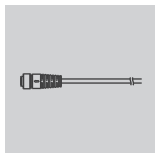
Aluminum body, milky diffuser (standard).

Wiring

Power/DMX input cable MALE connector 200mm
 Power/DMX output cable FEMALE connector 200mm

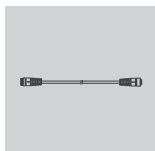


Optional Accessories



leader cable with female 6-pin waterproof connector for Power/DMX
* specify cable length to complete order

LC6



extension cable with male and female 6-pin waterproof connector for Power/DMX
* specify cable length to complete order

EC6

Ordering Information

example: 2608W15.0120.4130K.01+LC6(specify length)

2608W15 · [] · [] · [] + []

product	beam angle	light colour / CCT	finish colour	accessory
UNI-LINE-15W	0120 120°	4130K RGB+3000K 4140K RGB+4000K	01 aluminum	LC6 leader cable EC6 extension cable